

THE FEATHER RIVER HIGHWAY

On Friday, August 13, 1937, a gala banquet and ball in Oroville commenced a celebration of major importance for the Feather River country. After 70 years of planning and nine years of labor, a highway had finally been pushed through the Feather River Canyon, from Oroville on the eastern edge of the California Central Valley, to Keddie, seven miles north of Quincy, deep in the Northern Sierra. The festivities continued for three days in Quincy, Portola,

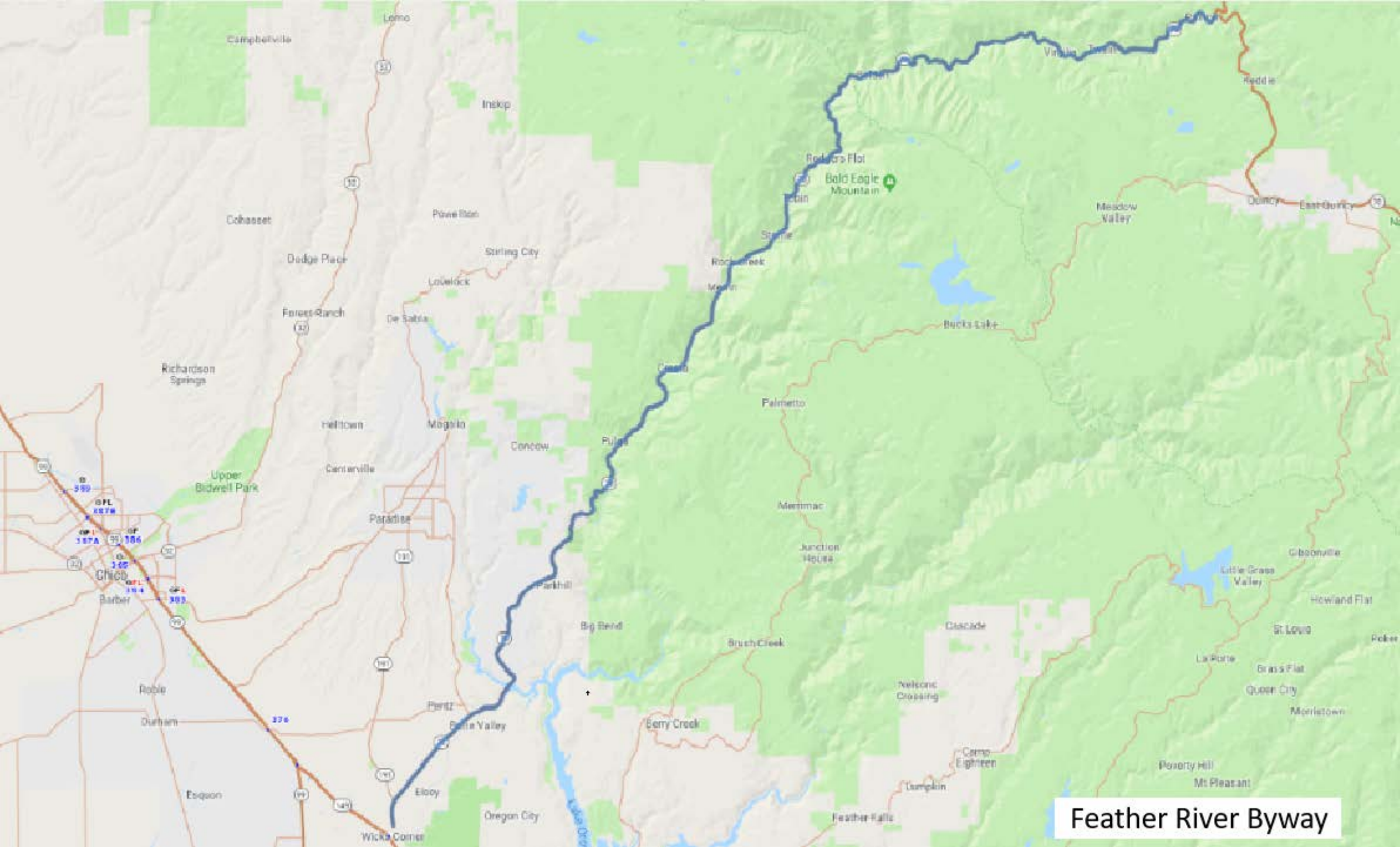
and other Feather River communities. This highway, which was completed at a cost in excess of seven million dollars, or about \$100,000 per mile, finally gave the residents of the canyon a year-round highway out to the Upper Sacramento Valley. Previous to completion the only access to the canyon was on horseback or by the Western Pacific Railroad. The highway is designated State Route 70, but is more commonly called the Feather River Highway.

The route is significant from a civil engineering standpoint due to the extremely difficult surveying and construction problems which were encountered. The Western Pacific Railroad was built through the canyon in 1909, and naturally took the best sites. It leaps back and forth across the Feather, seeking the path of least resistance. The highway, following along by almost 30 years, was forced to use a less desirable route. The canyon is too narrow in many places for both the highway and the railroad, so whenever the railroad crosses from one side of the canyon to the other, the highway usually does just the opposite. Both the rail-road and the highway use tunnels blasted out of the solid granite to maintain a relatively low grade up the canyon. The three highway tunnels are grouped together about three miles north of Cresta Powerhouse. Many other items of engineering interest are visible on a drive through the Feather River Canyon, including several types of bridges, both rail and highway, and the series of PG&E powerhouses and dams.

California State Route 70 the Feather River Scenic Byway



Feather River Highway Commemorative Plaque. August 1, 2009.



Feather River Byway



lat:38.8439,lon:-121.5437

Begin SR-70 Feather River Highway

Begin SR 70 at SR 99

California 99 Frontage Rd

E Striplin Frontage Rd

California 99 Frontage Rd

Golden State Hwy

E Striplin Frontage Rd

California 99 Frontage Rd

88

Catlett Warehouse

Catlett Rd

Catlett Rd

Catlett Rd

E Striplin Frontage Rd

Golden State Hwy

California 99 Frontage Rd

88

California 99 Frontage Rd

E Striplin Frontage Rd

E Striplin Frontage Rd

Golden State Hwy

W Catlett Rd

99 Yuba City
Chico

Marysville
Oroville 70
EXIT ONLY

lat:38.8439,lon:-121.5437

Begin SR 70 at SR 99

Golden State Hwy



Junction SR-70/SR-65
lat: 39.0926, lon: -121.5413

Duke's Diner

Good neighbor recycling

Chapman Ave

8th Ave

Olivehurst Public Utility

Olivehurst Community Park

10th Ave

11th Ave

Yuba Gardens Intermediate

Georgina Dr

Bomann Dr

Glenmore Dr

14th St

PadresAyudandoPadres

15th St

16th St

Junction SR-70/SR-65

lat: 39.0926, lon: -121.5413

70

65

70

65

70

Olive Ave

Sierra View Mortuary & Memorial Park

South Lindhurst Continuation High...

Lindhurst High School

Benzeen Auto Parts Used Auto Parts |...

Lindhurst High School Tennis Courts

Bernice Ave

Olive Ct

Olive Ave

Bernice Ave

Bernice Ave

Hale Rd

7th Ave

8th Ave

9th Ave

11th Ave

Market

Collie

Ardmore Ave

Fleming Way

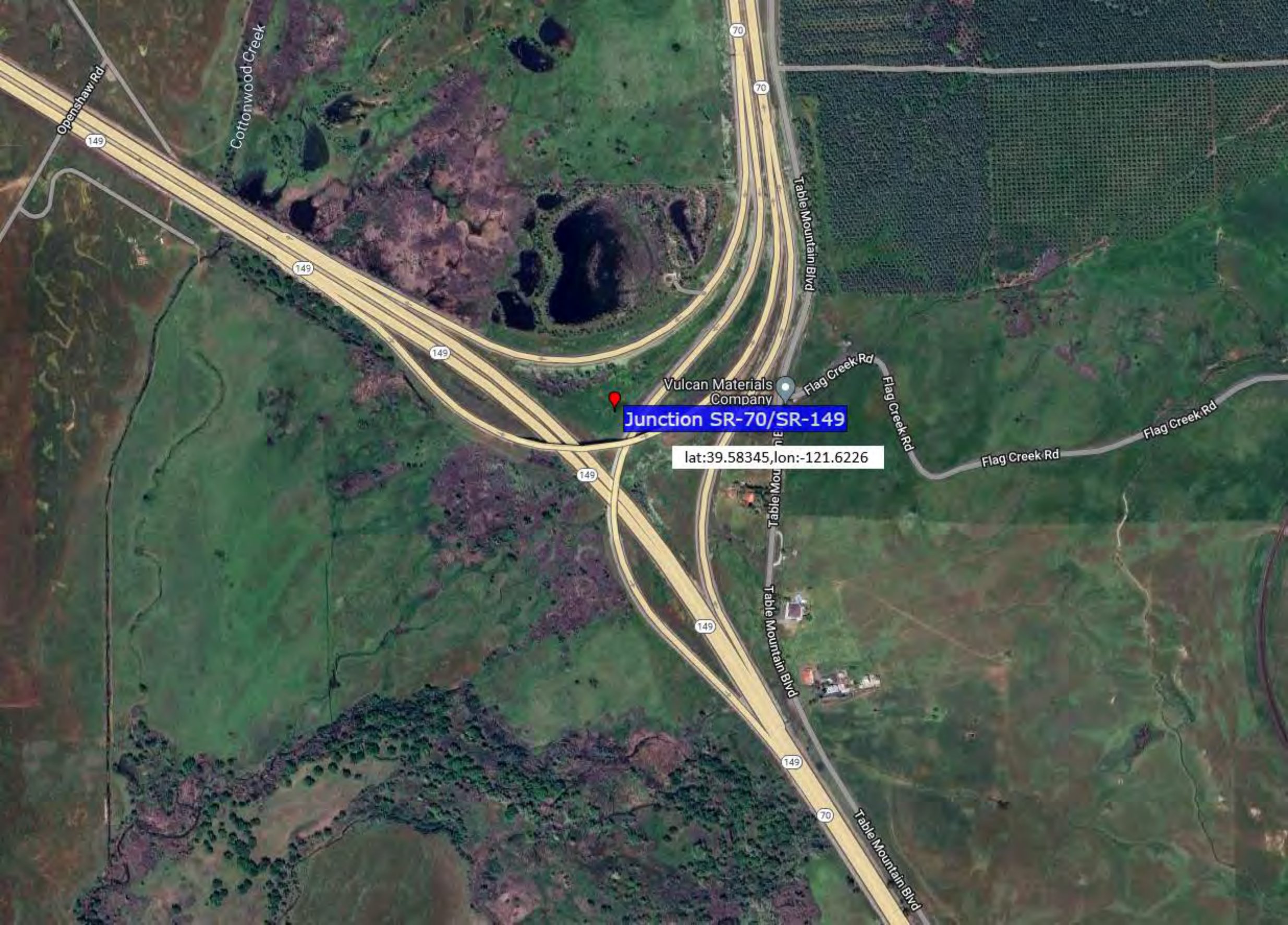
Powerline Rd

Le



lat:39.0959,lon:-121.5432

Jct SR 70 / SR 65



Junction SR-70/SR-149

lat:39.58345, lon:-121.6226

Vulcan Materials Company

Openshaw Rd

Cottonwood Creek

Table Mountain Blvd

Flag Creek Rd

Flag Creek Rd

Flag Creek Rd

Flag Creek Rd

Table Mountain Blvd

Table Mountain Blvd

Table Mountain Blvd

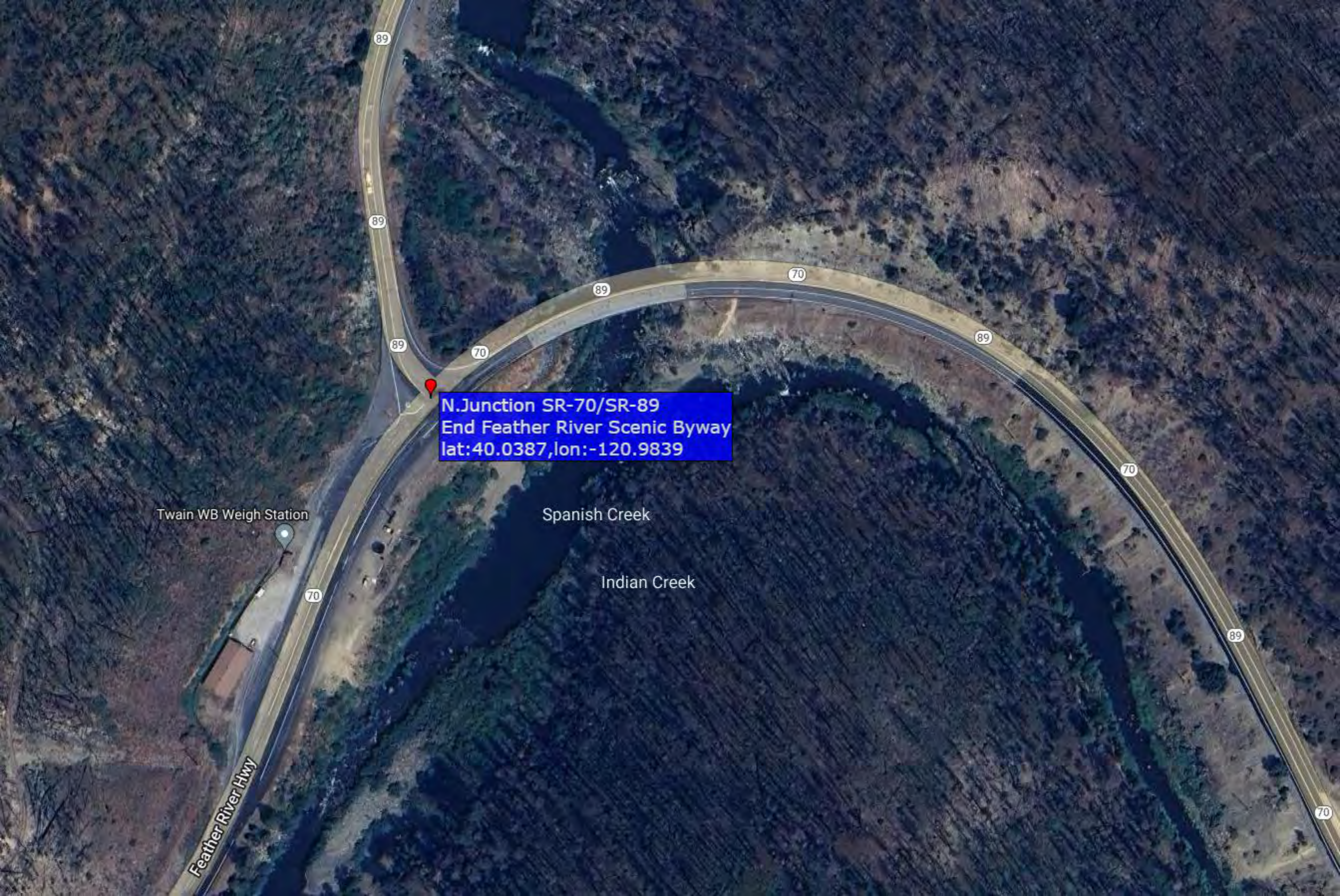
NORTH Chico TO
149 Red Bluff 99

NORTH Paradise TO
70 Quincy 191
EXIT ONLY

lat:39.5770,lon:-121.6181

CA-70

Jct SR 70 / SR 99 / SR 149



N.Junction SR-70/SR-89
End Feather River Scenic Byway
lat:40.0387,lon:-120.9839

Twain WB Weigh Station

Spanish Creek

Indian Creek

Feather River Hwy

89

89

89

89

70

70

89

70

89

70



lat:40.0387,lon:-120.9839

N. Junction SR 70 / SR 89 - End Feather River Scenic Byway