

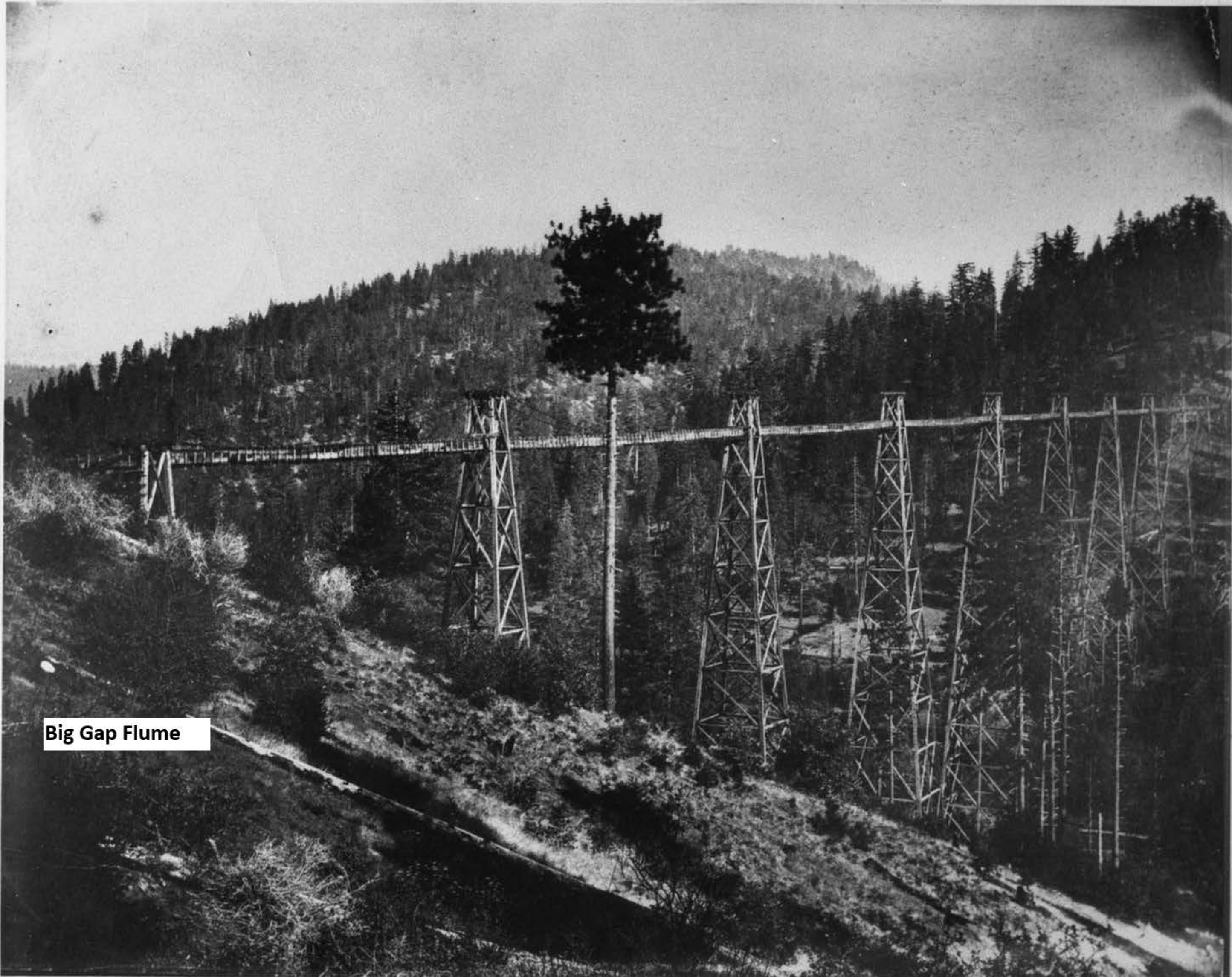


## BIG GAP FLUME

IN 1859 A WOODEN SUSPENSION FLUME 2200' LONG WAS CONSTRUCTED ACROSS THIS VALLEY BY G.W. HOLT AND AUGUST CONRAD AS A LINK IN THE GOLDEN ROCK DITCH SYSTEM WHICH CONVEYED THE WATER OF THE SOUTH FORK OF THE TUOLUMNE RIVER TO THE MINING AREAS OF GROVELAND (GARROTE) AND BIG OAK FLAT. IT WAS RIGHTFULLY CONSIDERED ONE OF CALIFORNIA'S EARLY DAY ENGINEERING MARVELS, AND IS SAID TO HAVE BEEN THE HIGHEST MAJOR FLUME CONSTRUCTED DURING THE GOLD RUSH PERIOD.

THE FLUME DECAYED AND FELL WITH A SPECTACULAR CRASH IN 1868. IN 1869 IT WAS REPLACED BY ANDREW ROCCA WITH AN INVERTED SYPHON—THE LARGE IRON PIPE WHICH STILL REMAINS IN PLACE AS A MONUMENT TO PIONEER ENTERPRISE.

TUOLUMNE COUNTY BOARD OF SUPERVISORS  
TUOLUMNE COUNTY HISTORICAL SOCIETY  
COUNTY HISTORICAL MARKER NO.5-1975



**Big Gap Flume**

lat: 37.81873, lon:-120.05520

Big Gap Flume  
Near Groveland near Big Oak Flat Road (State Highway 120)

Buck Meadow Trailhead

Big Oak Flat Rd  
120

Lucky Buck Cafe  
American

Yosemite  
Westgate Lodge  
4.6 (851)  
3 Star Hotel

Big Oak Flat Rd

Big Gap Flume Marker Location



## **References**

[Taking You Back in History: The Big Ditch and The Big Gap](#)

[Taking You Back in History: More on Buck Meadows](#)

[Chinese Cultural History in the American West Put in Spotlight by Forest Service, Partners](#)

[Big Gap Flume](#)

[National Register #75000438 - Big Gap Flume](#)

[Photo: Big Gap Flume Marker - The Historical Marker Database](#)

[Tuolumne River](#)

[USDA Forest Service - Heritage Resources](#)

[Groveland: South of the River - Tuolumne County Historical Society](#)

[NPGallery Big Gap Flume](#)